



**295,193 SF
AVAILABLE**

Leased

**415,981 SF
AVAILABLE**

PHASE II

Will Rogers Business Park

S Council Rd.

SW 29th St.

NEW INDUSTRIAL PARK | FOR LEASE
SW 29TH & S COUNCIL RD., OKLAHOMA CITY, OK

BRETT PRICE, CCIM, SIOR
bprice@newmarkrp.com
C: 405.613.8380

KRIS DAVIS, SIOR
kgdavis@newmarkrp.com
C: 405.202.9525

KARLEY HARPER
kharper@newmarkrp.com
C: 405.371.3498





DEVELOPMENT OVERVIEW

OKC Logistics Park is a new industrial park in the southwest submarket of Oklahoma City just 2 miles south of I-40, 1 ½ miles north of Hwy 152, and less than 5 miles from Will Rogers World Airport. Notable surrounding companies include Hobby Lobby, Amazon, Wal-Mart, FedEx, and Rexel.

The park will be developed in two phases. Phase I features two spec buildings totaling 1,006,931 square feet on 58 acres±. Phase II can accommodate up to 700,000 SF± with rail access.

PROPERTY HIGHLIGHTS



Southwest Submarket



Surrounding International Tenants



New Construction



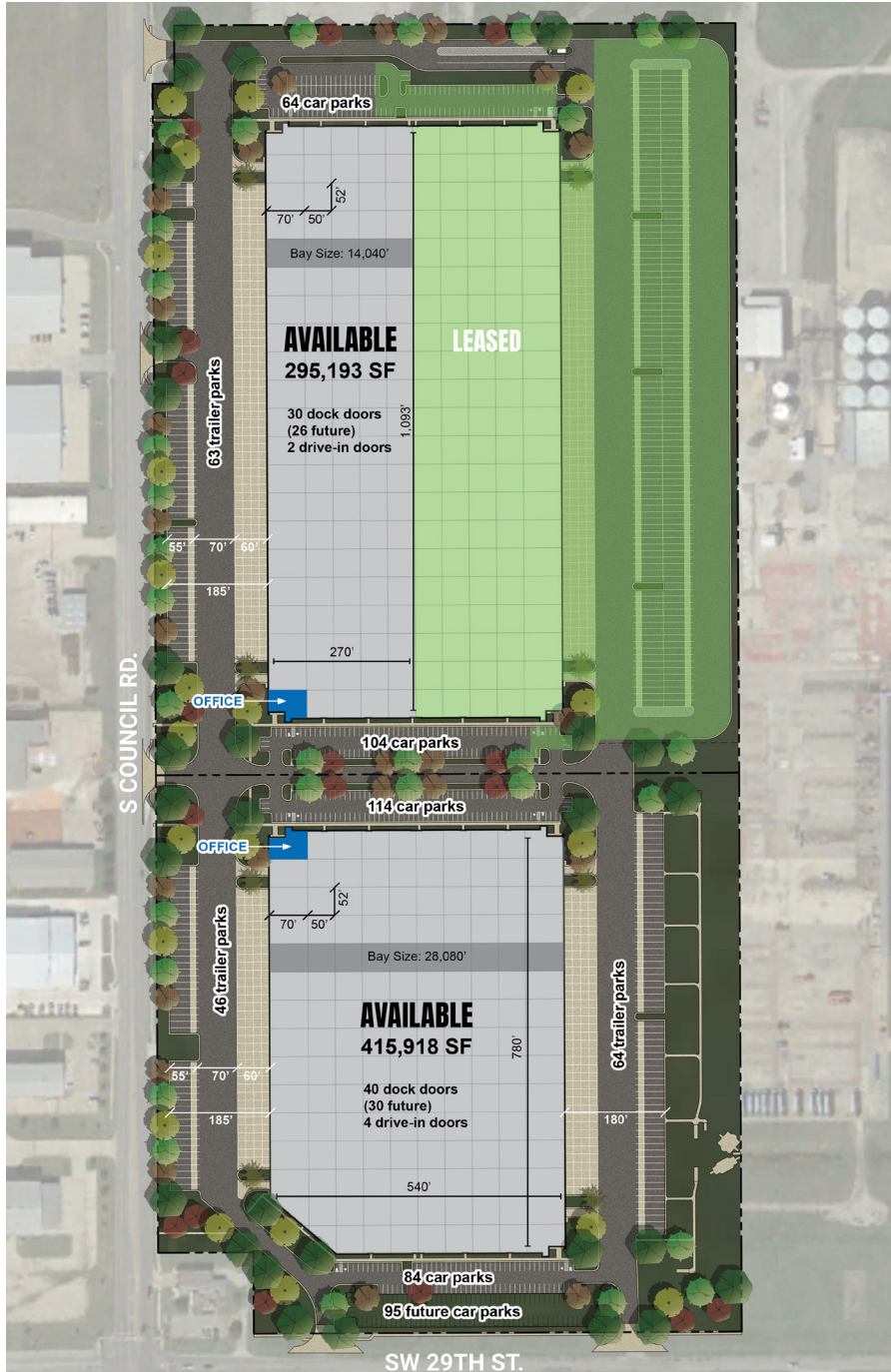
Cross Dock Facility



DEVELOPMENT DETAILS

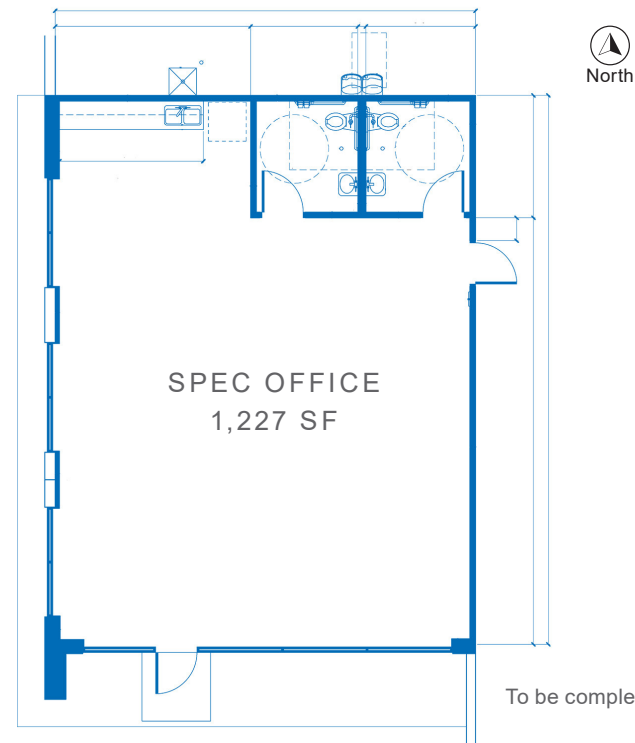
Total Development SF	Up to 1,717,087 SF
Lease Rate	Contact Broker
Development Site	115 Acres
Zoning	I-3
Market	Oklahoma City
Submarket	Southwest
Cross Streets	SW 29th St. & S Council Rd.
Rail Spur	Stillwater Central

PHASE I / BUILDING OVERVIEWS



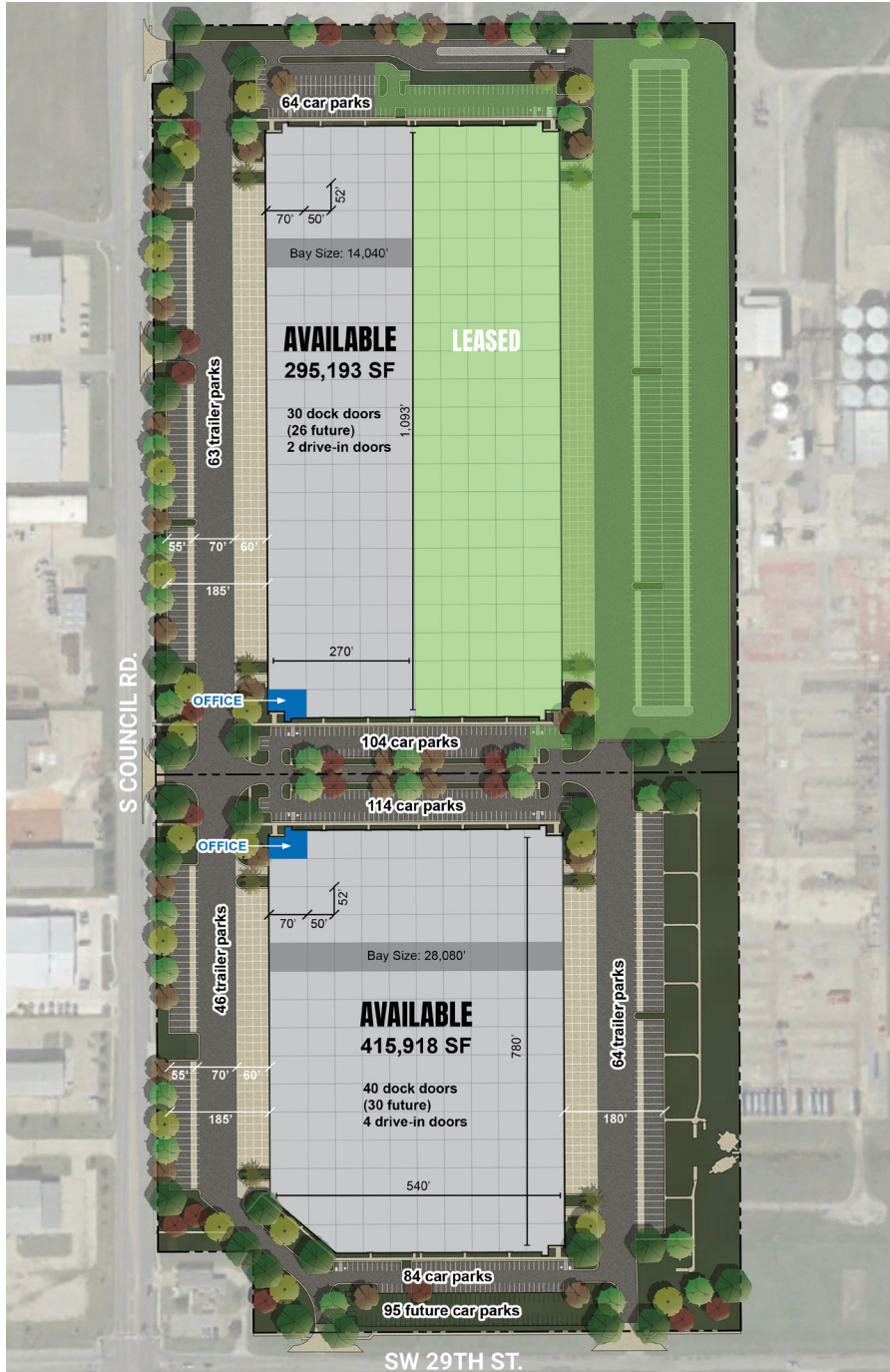
2400 S COUNCIL RD.

Building SF	590,950 SF (540' x 1,093')
Available SF	295,193 SF Available (270' x 1,093')
Column Spacing	52' x 50' with 70' speed bay
Bay Size	14,040'
Clear Height	36'
Doors	30 dock doors (26 future) 2 drive-ins
Dock Levelers	(30) 45k lb. mechanical pit levelers
Truck Court	185'±
Parking	63 trailer parks 168 car parks
Slab Construction	7" unreinforced 4,000 PSI
Fire Protection	ESFR
Electrical Available	2000 amps, 480/277V
Lighting	LED, 30 F.C.



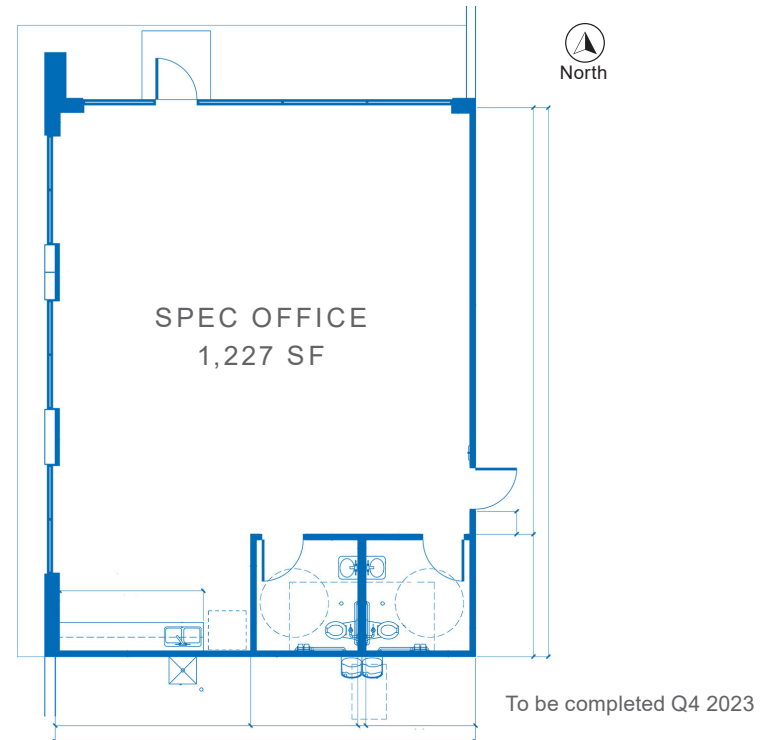
To be completed Q4 2023

PHASE I / BUILDING OVERVIEWS

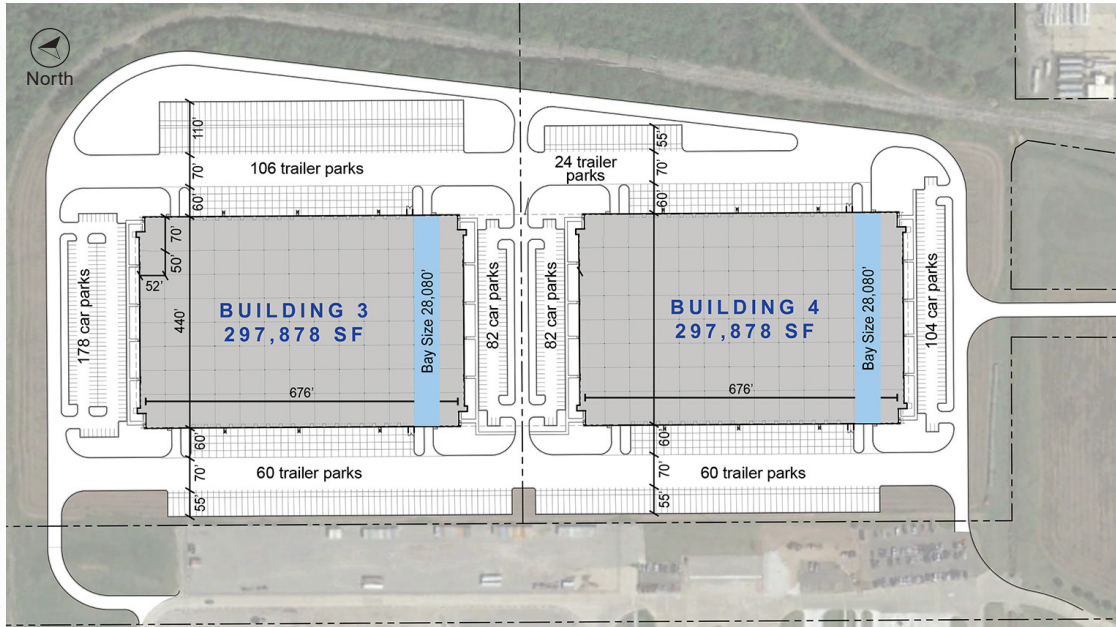


2800 S COUNCIL RD.

Building SF	415,981 SF (540' x 780')
Available SF	415,981 SF
Column Spacing	52' x 50' with 70' speed bay
Bay Size	28,080'
Clear Height	36'
Doors	40 dock doors (30 future) 4 drive-ins
Dock Levelers	(40) 45k lb. mechanical pit levelers
Truck Court	180± - 185±
Parking	110 trailer parks 198 car parks (95 future)
Slab Construction	7" unreinforced 4,000 PSI
Fire Protection	ESFR
Electrical Available	4000 amps, 480/277V
Lighting	LED, 30 F.C.

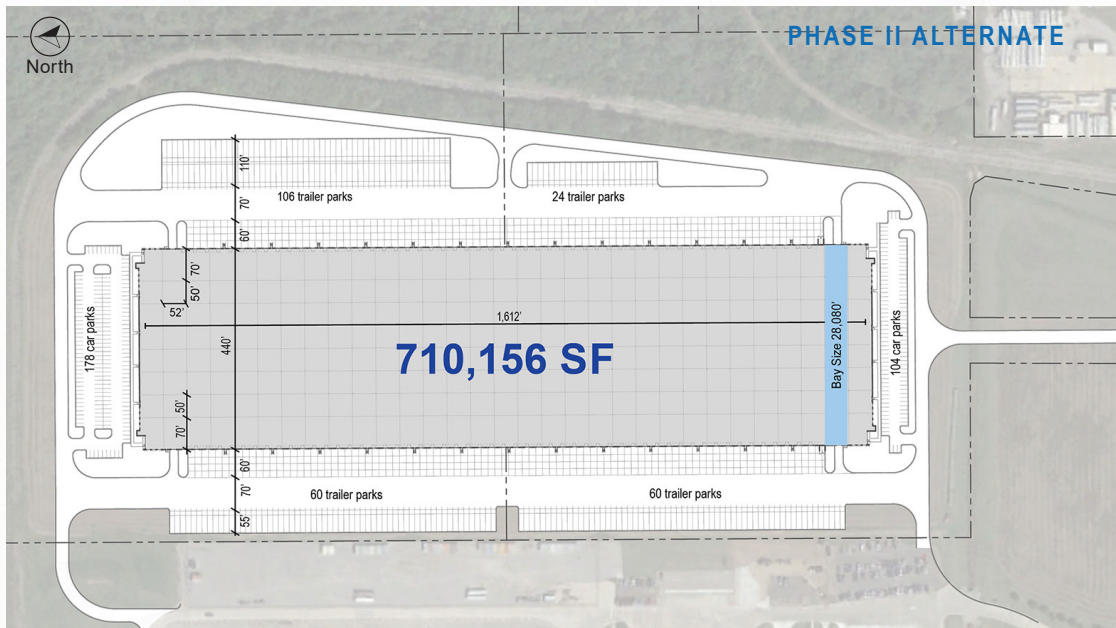


PHASE II / BUILDING OVERVIEWS



PHASE II BUILDING FEATURES

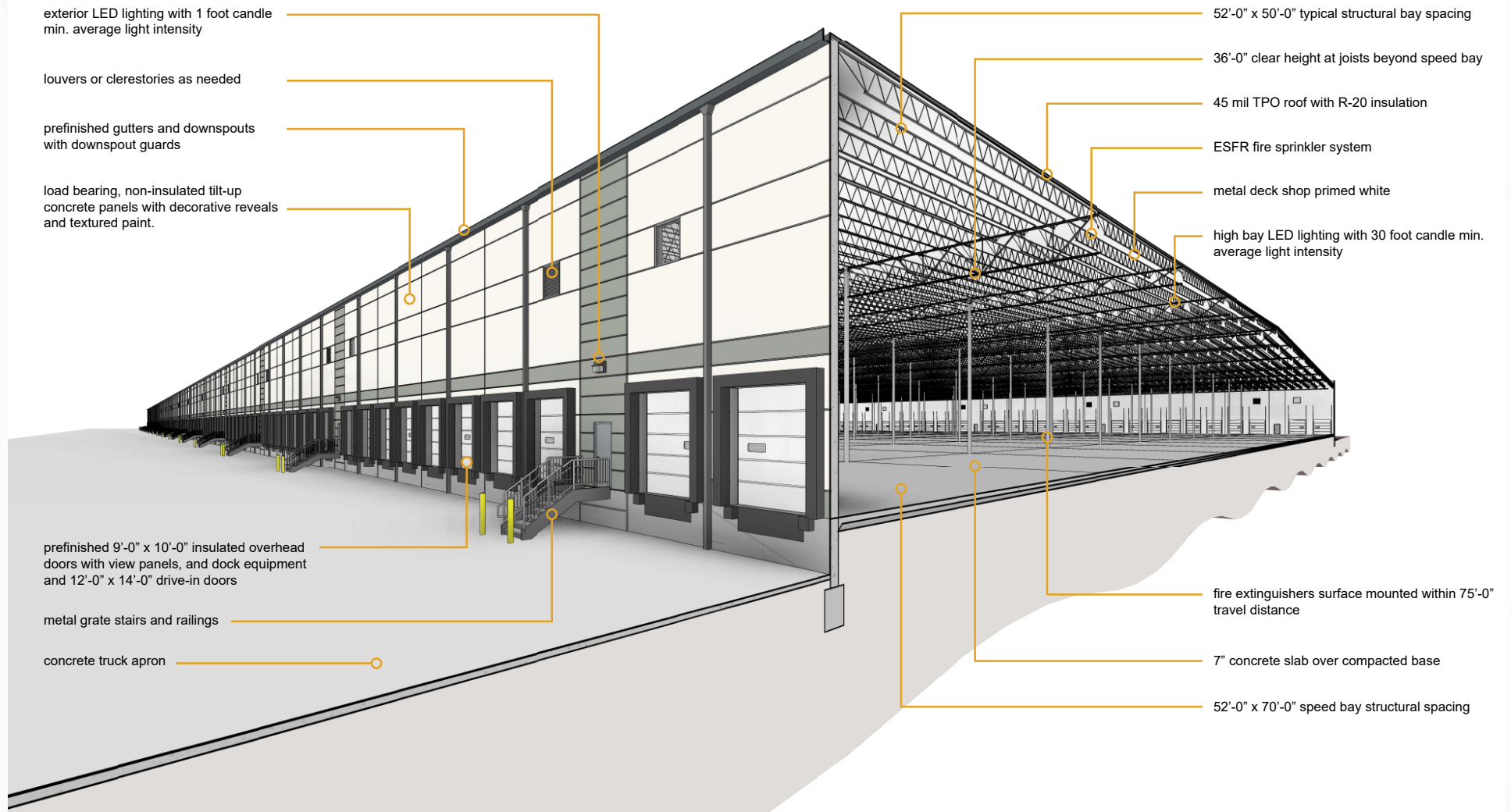
Building 3	Building 4
297,878 SF	297,878 SF
440' x 676'	440' x 676'
52' x 50' column spacing	52' x 50' column spacing
70' speed bay	70' speed bay
Bay size - 28,880'	Bay size - 28,880'
36' clear height	36' clear height
64 dock high doors	64 dock high doors
4 drive in doors	4 drive in doors
185± truck court	185± truck court
166 trailer parks	84 trailer parks
260 car parks	186 car parks
The buildings can be combined into 1 for a total of 710,156 SF	



PHASE II ALTERNATE BUILDING FEATURES

Building Size	710,156 SF
Building Dimensions	440' x 1,612'
Column Spacing	52' x 50'
Speed Bay	70'
Bay Size	28,880'
Dock Doors	190
Drive-In Doors	4
Trailer Parks	250
Car Parks	282

SECTION EXHIBIT





**295,193 SF
AVAILABLE**

Leased

**415,981 SF
AVAILABLE**

PHASE II

Will Rogers Business Park

S Council Rd.

SW 29th St.

